

April 2021

current 3rd year junior high school students
and students who have completed a
junior high school course overseas

Open for observation
and trial

Admission
Assessment
Schedule
Open for
Application

2020
11/28 Sat

2021
2/13 Sat

Admission Information
◆ Admission Procedures
◆ Application Form (PDF)
◆ Pamphlet Request



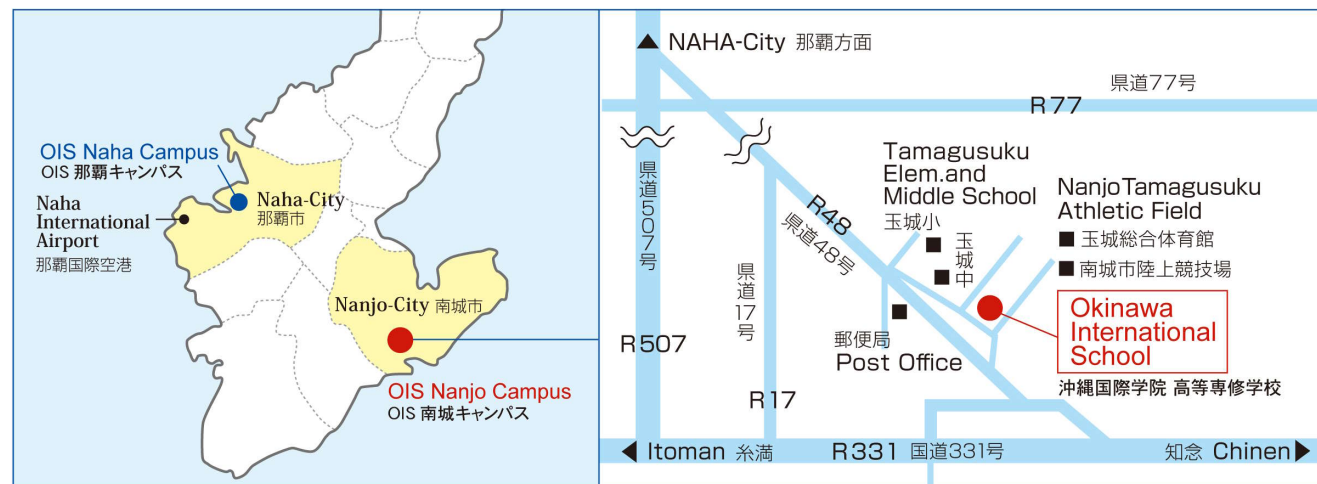
Online School Information Sessions

Connecting with Japan and the World
More information in detail By appointment only

Individual admissions consultation and school visits are held at any time

OKINAWA INTERNATIONAL SCHOOL Secondary Education

沖縄国際学院 高等専修学校



[PST Academy] The origin of the school name

PST stands for Persons Seeking Truth.
The future of society will continue to be an era in which
it is difficult to find answers. The ideal is the ability
to find one's own answers through the search for truth.

CONTACT OKINAWA INTERNATIONAL SCHOOL

143 Fusato, Tamagusuku, Nanjo-city 901-0611 JAPAN
✉ office@pst-ois.jp

お問い合わせは 沖縄国際学院 高等専修学校

〒901-0611 沖縄県南城市玉城富里143番地
✉ office@pst-ois.jp

Official Website

◆ Curriculum
◆ School Life
◆ Latest News



PST Academy 098(948)7740

OKINAWA INTERNATIONAL SCHOOL

Secondary Education 2020-2021



沖縄国際学院 高等専修学校



PST Academy



International
Baccalaureate

Global Education in OKINAWA: the Blue Zone of the world

The island known for good health, long life, beautiful nature, and mindfulness

人・心・自然 そして健康と長寿の島〈ブルーゾーン・沖縄〉をグローバル教育の舞台に

Okinawa, an essential environment for the development of internationally minded people, indispensable around the world.

Open-minded Okinawans

Honoring universal peace

Coexistence with nature

Pride for Okinawan history and heritage

Respect for different cultures and diversity

History of global talent education

沖縄には 人の心の豊かさがあります

平和を尊ぶ概念があります

自然とのゆたかな共生があります

歴史・文化の継承と誇りがあります

異文化・多様性への敬意があります

グローバルな人材教育の歴史があります



Okinawa is located within 1,500km of rapidly growing major cities in Asia, including Shanghai, Seoul, Taipei, Hong Kong, and Manila, all of which can be reached within 4 hours by plane. Okinawa has great advantages and potential as a national strategic special zone for tourism, international logistics, science, and information technology.

Be the Seeker of Truth!
『真理の探究者』となれ

Philosophy | 教育哲学

Okinawa International School believes that every human being is unique and full of potential and capabilities.

OIS Okinawa International School (OIS) keeps challenging the 21st Century where technological innovation, informatization, and globalization are progressing. At OIS, we help students enhance their capabilities and talents to be able to achieve their full potential. We aim to produce students who will become movers of society in the future and will be able to surpass the challenges at global standards.

Mission | 私たちの使命

To provide an educational environment that promotes character building and supports the intellectual, social, emotional, and physical development of our learners.

We provide the education that leads to character building by giving children the necessary knowledge for growth in intelligence, social skills, and emotional and physical development. We generate an environment of voluntarily learning for children. We provide a learning place to acquire ideal abilities to succeed in society as an international person who lives in the new era.

Vision | 私たちの構想

To ensure that our learners achieve their full potential, inspire a passion for learning, and create an international impact as global citizens who take pride in their own culture and capabilities.

We hope OIS students take pride in their own culture, and also in their skills, and capabilities. Our vision is deeply engaged in our educational programmes.



What is Blue Zone? 「ブルーゾーン」とは?

Okinawa is famous for its sub-tropical tourist destination with its natural beauty and healthy practices that lead to longevity. The concept originated with the Belgian demographer Michel Poulain and the Italian physician Gianni Pesz, who marked the Barbagia region of Sardinia with a "blue marker" on a map of the island of Sardinia, Italy, a region with a large number of long-lived people.

Since 2004, American research writer Dan Bettner has been working with National Geographic, and since the November 2005 issue of National Geographic, four new "Blue Zones" have been added to the map, including Okinawa. The results of this project have been published and spread further.

- Sardinia, Italy
- Okinawa, Japan
- Loma Linda, California, USA
- Nicoya Peninsula, Costa Rica
- Ikaria, Greece



We learn to find the “TRUTH”

「真理」を見つけるために 私たちは学ぶ

Grade 10 (MYP5)
KIRARA TAKEKURA

Inquirer Voice

I used to study at an IB school in Singapore, so to continue my education in an IB curriculum, I chose OIS, which was the only IB school in Okinawa. I think OIS is very different from the non-IB schools in many ways. I love how our school has small classes, which let us express our own opinions and ideas when we have discussions. I am also thankful for the teachers to teach us critical thinking, which helps us to be critical about the texts and any online sources that we encounter.

IB Course Kirara Takekura

What I like the most about my school is that I get to discuss topics more deeply and freely because we have fewer students. I also like that I get more self-development time. All the teachers and staff are very welcoming, engaged, and always trying to help us improve. I have developed my critical thinking skills so much ever since I came to OIS, and now I have a different way of viewing the world.

IB Course Kelly Shin

I chose this school because I wanted to improve my English skills and enter a good university in the future. The school provides a good learning environment. We have a small student body so every student has a chance to speak and ask questions. Our teachers explain in detail so the classes are easy to understand. The best point is that the teachers are from different countries, so we can learn about different cultures.

ILA Course
Haku Makishi

Before joining OIS, I had only experienced boring classes where students wrote passively on the blackboard or read textbooks. But at OIS, we have a lot of discussions and debates. Students are actively engaged, deepening their understanding of the curriculum, and therefore, are motivated to learn.

ILA Course
Miyuki Sunakawa

Principal Message

We nurture students to be truly international-minded people with the ability to bring about change in society.

Talents are sought after by the ever-changing international community. It is not just about the stereotypes of international students, but it is about people who are able to bring about a change in society and contribute to the construction of a sustainable and prosperous new global society. In order to nurture such important human resources, we need a new kind of education with the core values centered around the search for truth, international understanding and international collaboration, transcending the barriers of nation, ethnicity, gender, culture, history, language, etc.

Since OIS' opening in 2003, it has introduced a world-standard educational curriculum and has contributed to the development of human resources that can play an active role in an international society, and to the creation of a society with world peace and respect for nature through diverse exchanges.

At Okinawa International School, our students gather and learn from each other and develop themselves as internationally minded individuals, so that they can advance to universities around the world and eventually become true global elites who will demonstrate their abilities in various fields, including international organizations, such as the United Nations and multinational companies. The three years of study at OIS will be an invaluable time for the young people who dream of making a leap into the world to make this ideal a reality.

Director/Principal Masato Chinen
理事長/校長 知念 正人

Special Message



Professor Emeritus
Waseda University
Dr. Yoshiaki Shinoda

早稲田大学 名誉教授
教育学博士
篠田 義明

OIS was founded in these chaotic times to give students idealistic visions of life for the future and to develop young people who will go out into the world and change it. By challenging yourself, you will accumulate advanced knowledge, and from this knowledge, you will be able to succeed. You can fulfill this hope while having a good learning experience at OIS, where you will receive friendly guidance, clarity on your life's goals, and adequate knowledge.

Challenge creates knowledge. Knowledge creates character. Character creates destiny.



Professor Emeritus,
Akita International University
Chairman, Japan Association
for Global Competency Education
Michio Katsumata

国際教養大学 名誉教授
グローバル人材育成
教育学会会長
勝又 美智雄

When a Japanese youth wants to contribute positively in the international scenes, he (or she) has to learn things Japanese and practice to explain in English what are the superior things in Japanese culture. He should acquire the English proficiency hopefully up to the level of 80% of Japanese language he can freely conduct. Unlike other international schools in Japan, which are mostly dominated by English immersion education, OIS is very unique to offer the program of Japanese language, literature and culture as well as scientific and technological knowledge to study global environmental issues, based on IB methods.

I highly recommend OIS as the best and ideal place for Japanese youths who want to become global leaders in the future with high pride as Japanese citizens clamored with high English proficiency, and with deep knowledge of science and technology.



Chief Operating Officer
Okinawa Institute of Science and
Technology Graduate University
Keisuke Yoshio

沖縄科学技術大学院大学
チーフ・オペレーティング
・オフィサー
吉尾 啓介

OIS is committed to its philosophy, an education that prepares students to become internationally literate through two types of inquiry learning: the International Baccalaureate and the International Liberal Arts. Those initiatives are getting more attention.

I am sure that the education at OIS will help you develop a true sense of your culture, different cultures and communication skills, which are indispensable for you to survive and thrive in an international society that is now undergoing a major transformation. I have high expectations for OIS.

Learners seeking for global standard education

「国際基準の教育」を求める生徒が 世界中から集います

Learners' Profile in OIS

「沖縄国際学院」で学ぶ生徒像

In addition to the credits required to complete a high school course set by the Ministry of Education, Culture, Sports, Science and Technology, students at this secondary school can build their ideas upon a unique curriculum tailored to their career path and destination. The school attracts highly motivated students from Japan and abroad who have high aspirations working for the United Nations and international organizations in the future.



Intensive instruction in small class size

「少人数クラス」の理想的な環境

The small class sizes in the school's inquiry-based learning environment produce great results. Students are encouraged to exchange ideas from a variety of perspectives and to respect each other's opinions in order to reach the truth. It's an ideal environment for developing communication skills.



Multilingual Education Programs マルチリンガリズムをめざす語学教育

Multilingualism is the ability to communicate in more than one language. Developing students' language skills is the mission and responsibility of all teachers at our school. We value a learning environment in which students are encouraged to broaden their international perspectives, understand different worldviews, and share multiple perspectives through multilingual education.

The CEFR is an international standard for measuring language proficiency

The CEFR is the Common European Framework of Reference for Languages, a learning, teaching and assessment tool for foreign languages. It is an international benchmark that measures foreign language proficiency across linguistic boundaries and borders. We use WIDA, TOFEL and IELTS, which are used in 100 countries around the world, as a guideline for the acquisition of advanced language skills.

English language proficiency that students aim to achieve upon graduation

IB Course

CEFR Standard C1 equivalent to STEP(Society for Testing English Proficiency) Level1
What is a C1/C2 level? An "expert language user" with a good balance of knowledge and practical skills.

ILA Course

CEFR Standard B2 English Proficiency Test (equivalent to Level1)
What is a B1/B2 level? An "independent language user" who can use English to communicate complex and concrete ideas naturally.

Intensive Japanese writing skill instruction

Japanese students learn the "logical structure of the Japanese language" and improve their ability to express themselves in Japanese sentences. This is very useful for learning English and improving other languages and logical thinking.

Japanese Language Instruction for Foreign Students

For foreign students, we set goals such as the Japanese Language Proficiency Test (JLPT) to improve their Japanese language skills. Being multilingual in your native language, English and Japanese is a lifelong skill that will serve you well.

Two high quality courses to achieve the Sustainable

International Baccalaureate Course

IB コース 国際バカロレア コース

International Baccalaureate (IB) is based on an educational curriculum established by the International Baccalaureate Organization (IBO). The IB enables students to understand different cultures as a member of the international community and to develop an awareness and responsibility for their character. The emphasis is on education for all students to acquire the ability to develop a wealth of knowledge and to express themselves rather than learning only through textbooks and examinations, with the goal of achieving the "high intellectual standards" required by prestigious universities around the world for admission.

Okinawa International School Secondary Education is a candidate school of the IB Diploma Programme. The school is pursuing authorization as an IB World School. IB World Schools share a common philosophy - "commitment to high-quality, challenging, international education," - that Okinawa International School believes is important for our students.

IB Learner Profile IBコースの学習者像



International Liberal Arts Course

ILA コース 国際リベラルアーツコース

The goal of liberal arts education is to develop the skills necessary to solve the problems of modern society. While English, mathematics, Japanese, science, and social studies are the subjects of a typical high school, a liberal arts education covers the five areas of humanities, social sciences, natural sciences, mathematics, and art. Students will be able to acquire the knowledge and necessary skills, to challenge themselves to find and solve real-world problems through PBL (Project-Based Learning) or transdisciplinary studies that go beyond the framework of the humanities and sciences. Students are required to take courses during the three years to meet the number of credits required for university entrance exams with the aim to enter national and public universities, as well as universities overseas.



Development Goals (SDGs)

SDGs(持続可能な開発目標)を実現するための質の高い2つのコース

Domestic and Overseas Universities
Further your education at university and explore specific fields.
Become the elite desired by the global community.

SUSTAINABLE DEVELOPMENT GOALS

17 Specific Goals for Changing the World with ESD

ESD=Education for Sustainable Development



Environment Human rights Culture

The above picture is a message from the Education Subcommittee of the National Committee for UNESCO in Japan: "Towards the further promotion of Education for Sustainable Development(ESD)-to all those who implement ESD in schools and other institutions."

UNESCO Constitution Exemptions

"That the wide diffusion of culture, and the education of humanity for justice and liberty and peace are indispensable to the dignity of man and constitute a sacred duty which all the nations must fulfil in a spirit of mutual assistance and concern
"That a peace based exclusively upon the political and economic arrangements of governments would not be a peace which could secure the unanimous, lasting and sincere support of the peoples of the world, and that the peace must therefore be founded, if it is not to fail, upon the intellectual and moral solidarity of mankind."
Okinawa International School is committed to the UNESCO Constitution and is actively engaged in Education for Sustainable Development(ESD) to achieve the Sustainable Development Goals(SDGs).

International Baccalaureate Course

国際バカロレアコース



Bojan Brink (Germany)
Philipps University Marburg (BA,MA)

Acquiring Academic English, Creativity and Critical thinking skills

英語能力・創造力・クリティカルシンキングの習得

You can give yourselves a pat on the back and say that you made the right choice to come to OIS. What will await you here are not only smiling faces and the fresh air of the countryside but also high-standard learning opportunities in an authentic and challenging English learning environment.

It's not a mere slogan that IB's Diploma Programme can open many doors. It's true and if you work hard enough the Keios and Oxfords will not stay to be mere dreams. It's my pleasure to accompany you on your 2-year journey through the Diploma Programme as your TOK and English B teacher. You can count on me to help you through an exciting, challenging and surely unforgettable part of your life and boost your English and critical thinking skills. Let us work together to make it a fruitful time.

この学校には、自然ゆたかな環境で笑顔絶やらず、楽しく学習できる魅力がありますが、なおそれ以上に、本物の英語を学べる環境があります。知識を詰め込むことだけではなく、創造力と批判的思考を養いつつ、世界のあらゆることが学べます。みなさんの人生の高校生活という貴重な時間に、英語と知の論理の授業を通して、私たちは全力でサポートしていきます。一緒に実りある充実した時間を過ごしましょう。

International Baccalaureate (IB) Secondary Education Program [MYP] for 1st-year students

MYP's intensive academic and interdisciplinary approach to learning goes beyond the acquisition of knowledge to help students develop a global perspective and proactive mindset by asking how what they have learned connects to society.

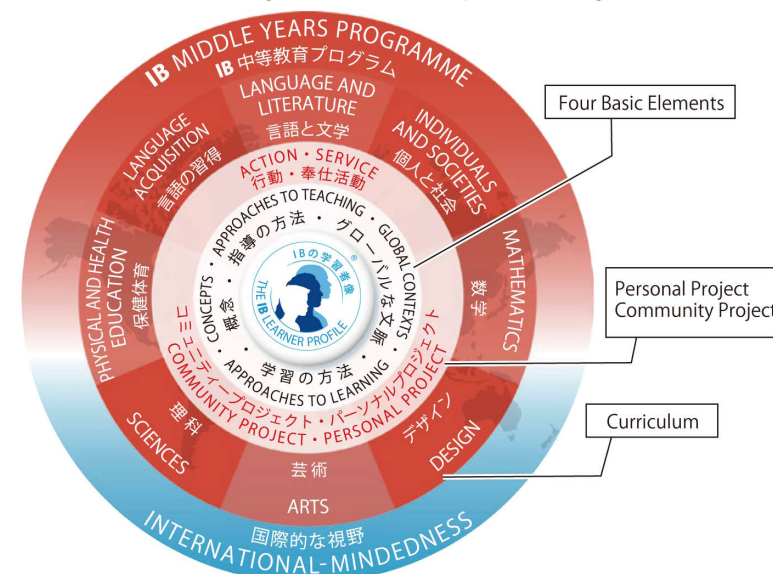
3 fundamental concepts of MYP

Holistic learning	Learning and instruction based on the notion that all knowledge is interrelated
Intercultural Understanding	International mindedness that all the students, guardians, teachers and faculty respect their own and other cultures
Communication	Understand the importance of open communication and practice the skill

IB Course Grade10 (MYP5) Class Schedule

Time	Mon	Tue	Wed	Thu	Fri
8:30~8:50	Home room ホームルーム				
8:50~9:40	Language and Literature 英語日本語 文学	Language and Literature 英語日本語 文学	Language and Literature 英語日本語 文学	Language and Literature 英語日本語 文学	Personal Project 個人プロジェクト
9:50~10:40	Individuals and Societies 個人と社会	Individuals and Societies 個人と社会	English for Academic Purposes アカデミック英語	Individuals and Societies 個人と社会	Pre-TOK 知の理論
10:50~11:40	Mathematics 数学	Mathematics 数学	Physical and Health Education 体育	Mathematics 数学	Mathematics 数学
11:50~12:40	Language Acquisition 英/日 言語習得	Language Acquisition 英/日 言語習得	Language Acquisition 英/日 言語習得	Language Acquisition 英/日 言語習得	Language Acquisition 英/日 言語習得
12:40~13:30	Lunch 昼食				
13:30~14:20	Science 科学	Arts アート	Science 科学	English for Academic Purposes アカデミック英語	English for Academic Purposes アカデミック英語
14:30~15:20	Mathematics 数学	Mathematics 数学	Independent Research 自由研究	Science 科学	Science 科学
15:30~16:00	Support Class サポートクラス	ELL/JLL 英語/日本語 サポートクラス	Support Class サポートクラス	ELL/JLL 英語/日本語 サポートクラス	Home room ホームルーム
16:00~16:30	Home room /Cleaning ホームルーム/清掃				

The programme model of MYP is described by the circle, and the three circles surrounding the center circle depict IB learning



2nd & 3rd year students are challenged with the IBDP

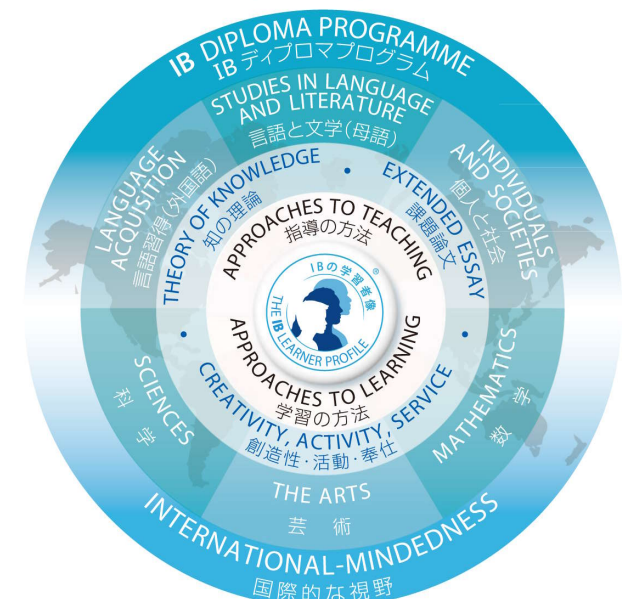
IBDP (International Baccalaureate Diploma Programme)

The knowledge and skills developed in the MYP are carried over into the IBDP deeper and broader, which focuses on six groups and three unique IBDP curriculum cores for dedicated exploration. Before graduation, students will take a standardized exam. The exam has a maximum score of 45 points, with a score of 24 or higher to receive an IB Diploma; a score of 40 or higher ensures admission to top universities around the world.

Okinawa International School Secondary Education is a candidate school of the IB Diploma Programme. The school is pursuing authorization as an IB World School. IB World Schools share a common philosophy – "commitment to high-quality, challenging, international education," which Okinawa International School believes is important for our students.



IB Diploma Programme



IBDP 6 Groups IBDP 6つのグループ

- ① Language and Literature ② Language Acquisition
- ③ Individuals and Societies ④ Science ⑤ Math ⑥ Arts

Students select subjects from the six groups and study them over two years. Also, in order to obtain the specialized knowledge and skills required at the university and subsequent occupations, students learn three to four of the six subjects at a higher level (HL/240 hours each) and the others subjects at a standard level (SL/150 hours each).

The IBDP Core IBDP コア要件

In order to obtain a diploma, in addition to meeting the assessment requirements of the six subjects, students must also take the following three compulsory core subjects.

① TOK: Theory of Knowledge 知の理論

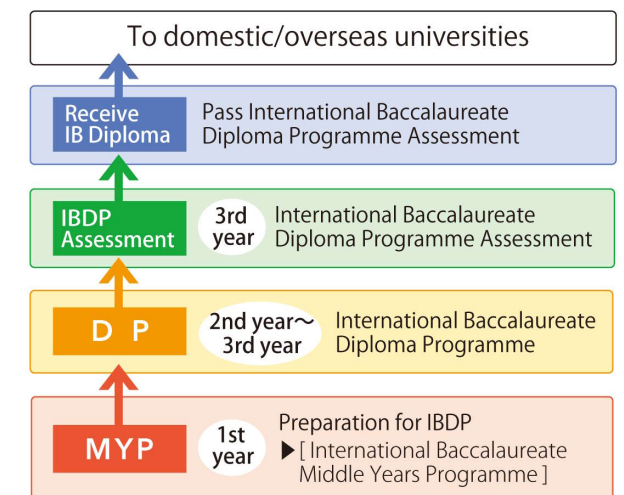
At least 100 hours of learning is required to facilitate a high level of critical thinking skills. Students will explore the essence of knowledge. Students are encouraged to develop their ability to perceive things in their own way and be aware of cultural sensitivities.

② EE: Extended Essay 課題論文

To nurture a high level of research and writing skills, intellectual discovery, and creativity, students choose a topic from their studies and complete an in-depth individual research project. They then summarize their results in an Extended Essay of 4,000 words in English. (8,000 characters are required if written in Japanese)

③ CAS: Creativity, Activity, Service 創造性・活動・奉仕

Through involvement with people, students engage in experiential learning and cultivate a range of perspectives including awareness of the human mind and spirit, humanitarian issues, desire for discovery, autonomy, independence, creative artistic and proactive exchange activities.



International Baccalaureate Integrated Education System at OIS

Department	Elementary	Middle School				High School	
Grade Level	Grade 6 (MYP1)	Grade 7 (MYP2)	Grade 8 (MYP3)	Grade 9 (MYP4)	Grade 10 (MYP5)	Grade 11 (DP1)	Grade 12 (DP2)
IB Programme	MYP (Middle Years Programme) 国際バカロレア/中等教育プログラム					IBDP 国際バカロレア ディプロマプログラム	

Okinawa International School Secondary Education is a candidate school of the IB Diploma Programme

International Liberal Arts Course

国際リベラルアーツ コース



Miltiadis Beratlis (Greece)
George Washington University (BA)
Keio University Graduate School of Law (MA)

Knowledge and skills only for risk takers

挑戦した者だけが得られる 本物の知識とスキル

If you are curious and seek knowledge beyond grades and certificates, then you have come to the right place. The OIS ILA course is unique, unlike any other! Advanced humanities and science courses? Sure, you will find plenty here! And yet we offer more...

From traditional Okinawan arts such as Bingata to developing mental skills through mindfulness practice, we offer a holistic curriculum to help you develop lifelong skills.

If self-growth through challenge in a community of like-minded individuals is something you might enjoy, then the OIS ILA course is definitely the right one for you!

If the thirst of any person who seeks truth can be quenched only after their journey of self-discovery has advanced, then we, at the OIS PSTA, kindly challenge you to begin your next quest... We, at the OIS PSTA, therefore, kindly challenge YOU to join us!

もし皆さんが、成績や修了証を越えた本物の知識を得たいなら、ILAコースはそれにふさわしい学びの場です。人文科学の教科では、卓越した教養を身につけることができます。また、紅型などの伝統工芸を通して情操を養い、総合的なカリキュラムで生涯にわたって必要なスキルも育成されます。ここには、好奇心を持って果敢に挑戦できる仲間がいます。探究心を持ち、挑戦し続けた者にしか得られないものがあります。私たちOISは、飛躍をめざす皆さんを常に全力でサポートします。OISから新たな一歩を踏み出しましょう！

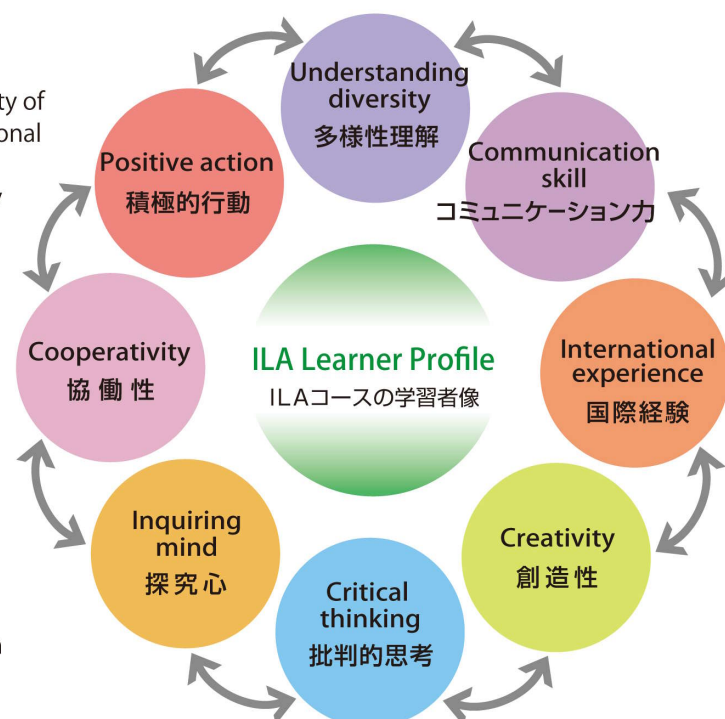
A unique global education curriculum that explores the truth

Global education and knowledge that transcends the boundaries of the humanities and science

The society in which we live is faced with a wide variety of problems, ranging from domestic problems, international relations, environment, and political economy. In order to confront and solve these problems, society needs people with global knowledge and education in both the sciences and the humanities.

Develop 'Seekers of Truth' who can make correct judgments and take action

At ILA, we emphasize the importance of understanding diversity rather than searching for the "one right answer." We develop students' ability to communicate their own opinions and reach mutual understanding while respecting the ideas of others, and to make correct judgments and take action while taking other points of view into consideration, even in a society inundated with information from social networking sites. Students will learn to become a "globally educated person" who seeks the "truth."



Not focused on textbooks or examinations, students will learn to find their own goals and dream universities

Student-centered class where students are always the leading role

Transdisciplinary curriculum and inquiry-based learning are essential to the development of academic skills. The most important aspect of inquiry learning is the process in which students raise their own questions, work hard to solve them, and explore to find the answers (truth). This is not the kind of learning that takes place in tests and exams where students are expected to seek answers to questions that already exist.

Teachers design lessons in teams

The ILA is a transdisciplinary curriculum that covers the humanities, social sciences, natural sciences, and mathematics. Each teacher shares their own lesson plans with the teaching team to help each student achieve a deeper understanding of the content.

Acquiring Academic English

Students will take the WIDA test to determine their level of English language proficiency. Students will also take the TOEFL Junior or TOEFL test twice a year to prepare for the TOEFL requirement to be eligible to study abroad.

TOEFL ibt Score	Below 41	71~42	94~72
CEFR Standard	A 2	B 1	B 2
Eiken Grade	Pre-2	2	Pre-1
Target	End of 1st year	Graduation	

ILA Course Grade10 Class Schedule

Time	Mon	Tue	Wed	Thu	Fri
8:30~8:50	Home room ホームルーム				
8:50~9:40	Language and Literature 日本語文学	Language and Literature 日本語文学	Language and Literature 日本語文学	Language and Literature 日本語文学	Science 科学
9:50~10:40	Mathematics 数学	Social Studies 社会	Mathematics 数学	Science 科学	Social Studies 社会
10:50~11:40	TOEFL Prep TOEFL 準備コース		Kinesiology 身体運動学	Mathematics 数学	
11:50~12:40	Language Acquisition 英語	Language Acquisition 英語		Language Acquisition 英語	Language Acquisition 英語
12:40~13:30	Lunch 昼食				
13:30~14:20	Intercultural Inquiry 異文化探究	Science 科学	TOEFL Prep TOEFL 準備コース	Arts 芸術	Mathematics 数学
14:30~15:20	Social Studies 社会	Human Development and Family Studies 人間科学	ICT ICT		Independent Research 個人探究学習
15:30~16:00	Support Class サポートクラス	Support Class サポートクラス	Support Class サポートクラス	Support Class サポートクラス	Home room Cleaning ホームルーム清掃
16:00~16:30	Home room / Cleaning ホームルーム/清掃				

In the ILA course, about 40% of the classes in the first year are taught in Japanese. Students will acquire excellent English language skills over the course of three years while increasing the percentage of English language instruction by each grade.



OIS Mid-term study abroad program OIS 中期留学プログラム

We will continue to increase the number of countries and schools for study abroad programs. We will also offer short-term (1-month) courses to help as many students as possible to have a valuable experience. Please note that each course has a different program schedule. Please refer to our website for the latest information.

●Experience the difference

Language and lifestyle differ from country to country. In order to objectively know, learn and understand these "differences," it is important to prepare for your departure and to spend several months studying abroad.

●Knowing what we cannot do

During the time abroad, facing and dealing with those unexpected barriers in everyday conversation, etiquette, and expression of emotions will help you grow.

●Achieving the GOAL

In Japan, deviation scores and university acceptance are important. By the world's standards, this is odd. In the international community, high school students should already have their future goals in mind. Why do we learn? The essence of studying abroad is that the time you spend talking with your classmates from different backgrounds will surely help you to find your own answer.

Monterey Bay Academy (MBA)

Location	California, US
Period	Mid-August to late December
Accommodation	Dormitory on campus by gender
School type	Coeducational and Boarding school

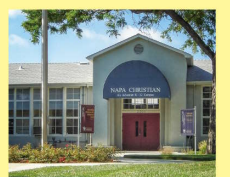
Partner with an international student support organization. Japanese support is available.



Napa Christian campus of education

Location	California, US
Period	Mid-August to late December
Accommodation	Homestay
School type	Coeducational School

Currently, there are 12 international students from 9 countries (including high school students)



Inspiring and experienced teachers with global sights

世界基準の教育を担う 精鋭教師陣

We have brought together a team of great teachers from all over the world with a high level of expertise and teaching skills. All of the teachers at OIS have a rich experience as educators and are well aware of the importance of understanding multiculturalism and diversity in international education.

From Nanjo to the World! ~Messages from Department Head~

In the global society of the 21st century, people with different ethnicities and from different cultures become aware of each other's identities and foster a spirit of tolerance and mutual understanding. Through our challenging educational programs, International Baccalaureate Diploma Programme and International Liberal Arts Program, we will educate students to become globally competent individuals who understand different cultures, work with people from diverse backgrounds, and can describe their own culture in their own words. We're looking forward to welcoming you to make the world your stage!

いまの21世紀のグローバル化時代は、異なる民族や文化に属する人たちが、お互いのアイデンティティを自覚し、寛容の精神や相互理解を育む時代です。本校は、国際バカロレアディプロマプログラム(IBDP)、国際教養プログラム(ILA)を通して、異文化を理解し、多様な背景を持つ人々と協働し、そして自国の文化を自分の言葉で語ることができる「真の国際教養人」を育てます。

PST Academy
OKINAWA INTERNATIONAL SCHOOL
Secondary Education
Department Chief / Shogo Okuma

Faculty Profile 講師の紹介



Shogo Okuma
奥間 政吾
◆Japan
◆California State University,
Dominguez Hills
◆Secondary Department Chief
◆DP Coordinator
◆PE, Kinesiology, CAS



Miho Endo
遠藤 美穂
◆Japan
◆University of North Texas
◆Japanese Acquisition



Kanoko Izena
伊是名 佳乃子
◆Japan
◆University of the Ryukyus
◆Japanese Literature



Miltiadis Beratlis
ベラトリス・ミルシャディス
◆Greece
◆Keio University
◆Individuals and Societies/
TOEFL&EIKEN Preparation
Course



Yugo Nakamura
中村 裕吾
◆Japan
◆The University of Oxford
◆Mathematics



Bojan Brink
ブリンク・ボーヤン
◆Germany
◆Philipps University Marburg
◆TOK/English Language
Acquisition



Anja Sueyoshi
末吉 アニャ
◆Germany
◆Ludwig-Maximilian
University Munich
◆Individuals and Societies/
History



John Tang
タン・ジョン
◆United States
◆San Francisco State
University
◆English Literature



Jovenia de Vera Garcia
ガルシア・ジョベニア・デ・ヴェラ
◆Philippines
◆University of Santo Tomas
◆Science/Biology



Nancy Paras
パラス・ナンシー
◆Philippines
◆De La Salle University
◆Science/Chemistry



John Julius Fajardo
ファバルド・ジョン・ジュリアス
◆Philippines
◆University of the Philippines
◆Mathematics



Monina Liza Mendez
メンデズ・モニナ・リザ
◆Philippines
◆Philippine Normal University
◆English Language Acquisition



Rose Anne Camacho
カマチョ・ローズアン
◆Philippines
◆Philippine Normal University
◆Mathematics



Alexandra Jimenez
アレクサンドラ・ヒメネス
◆Columbia
◆Los Andes University
◆Visual Arts

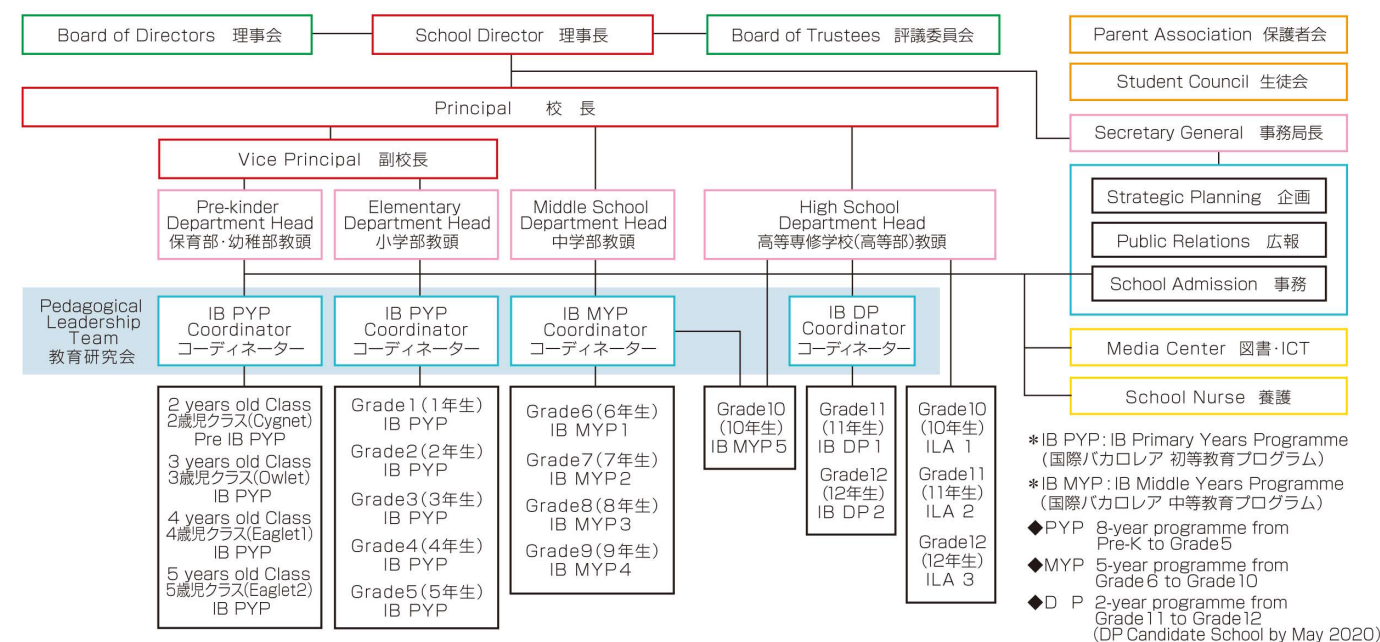


Yae Motome
求 八重
◆Japan
◆Okinawa International
University
◆Japanese Literature

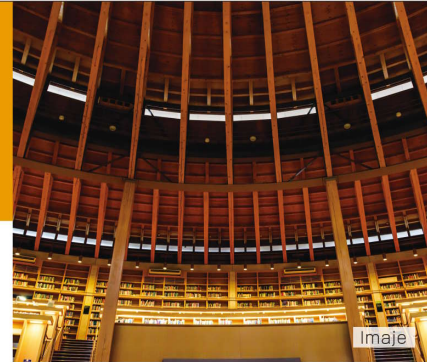


Aya Fujita
藤田 綾
◆Japan
◆Tsurumi University
◆Librarian

OKINAWA INTERNATIONAL SCHOOL Organization Chart 組織図



The pathway to universities across the world 「世界中」に広がる 大学への進路



Students who earn a diploma in an IB course are recognized as having completed an international standard high school education, and many universities in Japan and overseas are opening their doors to them.

Students from ILA courses who have improved their academic and communication skills can also go on to study at universities in Japan and overseas with the aim of playing an active role in the international community.

More Universities accept IB students

Domestic Universities by December 2019	24 National and Public Universities Tokyo University, Kyoto University, Tsukuba University, Tokyo University of Foreign Studies, Tokyo University of the Arts, Ochanomizu University, Kanazawa University, Nagoya University, Tohoku University, Osaka University, Okayama University, Akita International University, Yokohama City University, Osaka City University, Hiroshima University, Nagasaki University, Kagoshima University, Aizu University, Tokyo Metropolitan University, Tsuru University, Matsumoto Dental University, and 3 more
	139 Private Universities Waseda University, Keio University, Kogakuin University, International Christian University, Juntendo University, Sophia University, Tamagawa Academy & University, Toyo University, Hosei University, Rikkyo University, Nippon Veterinary and Life Science University, Nagoya University of Commerce & Business, Chukyo University, Aichi Medical University, Kwansei Gakuin University, Ritsumeikan University, Ritsumeikan Asia Pacific University, Kindai University, Kyoto University of Foreign Studies, Toyohashi University of Technology, Kobe College, Meiji Gakuin University, Chuo University, Aoyama Gakuin University, Seinan Gakuin University, and 14 more
Overseas Universities by December 2019	More than 2,500 universities around the world Harvard University, Boston University, Brown University, Pennsylvania State University, Columbia University, University of California Los Angeles UCLA, Stanford University, University of California Berkeley, Yale University, New York University, Princeton University, University of Oxford, University of Cambridge, King's College London, University of Edinburgh, The University of Sydney, The Australian National University, The University of Melbourne, University of Toronto, The University of Queensland, The University of British Columbia, etc



Schools of Medicine, Dentistry, Pharmaceutical Sciences and Veterinary Medicine accepting IBDP graduates

School of Medicine	Tokyo Medical and Dental School, Hokkaido University, Tsukuba University, Okayama University, Nagoya University, Aichi Medical University, Hiroshima University, Kagoshima University
School of Dentistry	Tokyo Medical and Dental School, Hokkaido University, Hiroshima University, Kagoshima University, Okayama University
School of Pharmaceutical Sciences	Hokkaido University Okayama University, Hiroshima University
School of Veterinary Medicine	Hokkaido University, Kagoshima University

Academic and Career Path Support

We place great importance on having a "heart-to-heart talk" with each student, and we have a thorough guidance system in place to help students with everything from career counselors to determine the target university and to prepare for exams. Based on the course in which you are enrolled, your language ability, and the qualifications you have acquired, we will help you choose the most suitable course. We will support you in detail by discussing with you what kind of career path you want to have in the future.



Question and Answer



Q2 What level of English proficiency is required for admission?

As an international school that nurtures students to be active on the world stage, students are required to have a certain level of English before admission. The IB course requires [CEFR B1 (EIKEN Grade 2 or higher)] The ILA course requires [CEFR Standard A2 (EIKEN Pre-2)]. Japanese students are required to be able to write composition in Japanese.

Q1 What is the significance of learning at PSTA?

In our school, we are able to provide world-standard educational programs such as the International Baccalaureate (IB) MYP and DP, and ILA courses. In addition to the credits required to complete a high school course as defined by the Ministry of Education, Culture, Sports, Science and Technology (MEXT), each student in our school is able to build upon a unique curriculum tailored to his or her desired career path and destination.

Q3 Can I get a Japanese high school diploma?

Okinawa International School Secondary Education is approved by MEXT. The credit units that are acquired at the time of graduation are accepted as the requirements of admission to universities in Japan and overseas.

Q4 Is it possible for students from other prefectures or countries to study in OIS?

Of course, it is possible. Our school is open to students from all prefectures of Japan, Mainland China, Taiwan, Hong Kong, Korea and other Asian countries, to the United States and Europe. Students from other places can live safely and comfortably in a homestay or dormitory (scheduled to open in September 2021).

Advanced facilities and beautiful natural environment

先進の教育設備と 自然美の学芸環境



Okinawa International School is located on the hilltop of Tamagusuku, a place of great natural beauty overlooking the East China Sea connected to the Pacific Ocean. The school is equipped with advanced facilities for international education, including a laboratory and a library with excellent safety measurements in place. There are also plenty of facilities for activities, including a gymnasium and athletic fields.

Library 図書室

PSTA has an abundant book collection and digital resources that are useful for the inquiry learning approach of IB. Our building-wide wi-fi environment and media rooms allow for direct access to the internet at any time.



Chemistry Lab. 化学室

We provide a safe and engaging environment for the study of the natural sciences with equipment and machinery that conforms to the international safety standards.



Art & Design 美術室

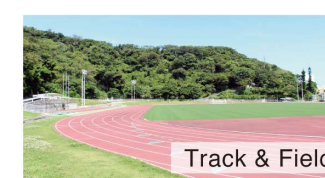
Students learn design, illustration, and Okinawa's unique traditional crafts in our specially designed studio.



Exercise Facilities 運動施設



Fully furnished exercise facilities for health and physical education classes.



Annual sports events at the athletics stadium surrounded by nature.



Accommodation 滞在生活施設

We warmly welcome students from overseas and other prefectures to the comfortable accommodation in a safe environment.

Homestay ホームステイ

After school, students will stay and live with carefully selected host families in Nanjo City.

Boarding House 寄宿舎

Planning to open in September 2021

At the boarding house, students will be provided with academic support. While living together with people from different countries, our students can enhance their social and communication skills, promote respect and courtesy, and develop a strong sense of self-reliance and independence.

School Bus スクールバス

We also have a safe commuting system in place.

Current available routes

- Okinawa City, Middle Area Route
- Ginowan, Urasoe Route
- North of Naha City, Shuri Route
- South of Naha City, Oroku Route
- Tomigusuku, Itoman Route



Convenient access with medical resources nearby Beautiful sub-tropical nature are all in close proximity

Naha International Airport



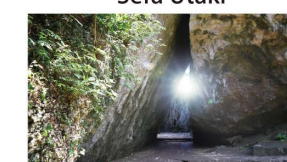
It takes about 30 minutes by car from Naha Airport to our school. It is conveniently located for easy travel.

Okinawa Nanbu Medical Center



It takes about 20 minutes from our school to Nanbu Medical Center by car. It is a general hospital with a children's medical center and an emergency room.

UNESCO World Heritage Site, Sefa Utaki



The southern part of the main island of Okinawa is dotted with historical cultural heritage and beautiful sights.

Beaches nearby



Beautiful beaches such as Hyakuna Beach and Mibaru Beach are nearby. Beach cleaning and other activities are also held there.